

Groove Diameter and Groove Width Gages Face Grooves

BX-1000 Series BXG-1000 Series



**BX-900
Ball Mic Gage**



**BX-1000
Groove Diameter Gage**



**BXG-1000
Groove Width Gage**



Measures Face Grooves

HOW TO ORDER

1. Select the BX-900, BX-1000, BXG-1000, or BXG-1002 gage model.
2. If selecting the BX-1000 gage, choose an optional rail if necessary.

The BX-1000 series of gages measures face groove diameters. These gages adjust to cover all sizes of R, RX, and BX ring grooves or are designed for special grooves.

The standard gage measures groove diameters from 2.6" - 13" and groove widths from .34" - 1.5". Optional rails extend the range of diameters from 13" - 37". The face groove gages accurately measure the ring groove diameter and width at the critical sealing point of the face groove. Gage indicators show actual deviation from a preset master dimension.

The BX-900 is our version of the Cameron ball mic gage. No indicator is on the gage, but T188 contact points are included.

The BX-1000 can be used to measure straight or tapered groove diameters, shallow bores, and hole locations. Contact points included are .188" (T188).

The BXG-1000 measures widths of straight or tapered grooves and includes .072" contact points (T072).

The BXG-1002 is a groove width gage designed for a special 2.0" groove. A set of T072 contact points are included with the gage.

Setting Masters for various face groove and hole locations are available.

Features

- Measures face grooves for a range of diameters.
- Replaces traditional GO/NO GO templates.
- Provides accurate measurements at the critical sealing point of the face groove.
- Allows use in a manufacturing or field environment due to durable construction.
- Requires presetting using a micrometer or Gagemaker's MIC TRAC measurement center (setting dimensions and tolerances for API ring grooves supplied with gage).

BX-1000 AND BXG-1000 SERIES GAGES

Model	Description	Range
BX-900	Ball Mic Gage w/ T188 points (no indicator)	BX, R, RX Grooves Diameters 2.6" - 13"
BX-1000	6B Groove Diameter Gage w/ T188 points	BX, R, RX Grooves Diameters 2.6" - 13"
BXG-1000	6B Groove Width Gage w/ T072 points	BX, R, RX Grooves Widths .34" - 1.5"
BXG-1002	Special Groove Width Gage w/ T072 points	Special Groove Widths 2.0"

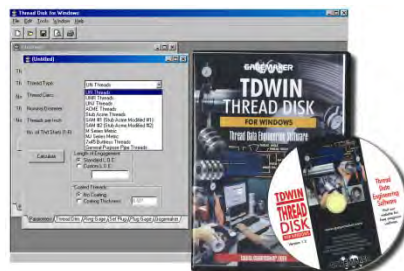
BX-1000 Rails*



*Extensions with various lengths not listed above are available.

Model	Description
BX-R13	13" Optional Rail, Groove Diameters to 13"
BX-R24	24" Optional Rail, Groove Diameters to 25"
BX-R30	30" Optional Rail, Groove Diameters to 31"
BX-R36	36" Optional Rail, Groove Diameters to 37"

BX and BXG series Optional Equipment



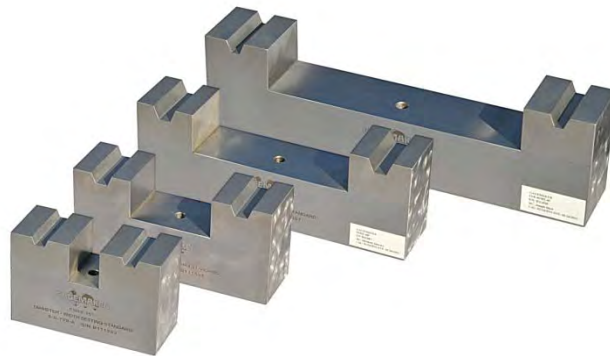
Model	Description
TDWIN	Thread Disk for Windows Software Includes a Ball MIC calculator for BX Series gage setting dimensions



FACE GROOVE AND HOLE LOCATION GAGE SETTING MASTERS

Setting Masters for various grooves. Specials or sizes not listed here are available upon request. Please call for more information.

Model	Description	Model	Description
FSBX-150	Setting Master for BX-150	FSBX-162	Setting Master for BX-162
FSBX-151	Setting Master for BX-151	FSBX-163	Setting Master for BX-163
FSBX-152	Setting Master for BX-152	FSBX-164	Setting Master for BX-164
FSBX-153	Setting Master for BX-153	FSBX-165	Setting Master for BX-165
FSBX-154	Setting Master for BX-154	FSBX-166	Setting Master for BX-166
FSBX-155	Setting Master for BX-155	FSBX-167	Setting Master for BX-167
FSBX-156	Setting Master for BX-156	FSBX-168	Setting Master for BX-168
FSBX-157	Setting Master for BX-157	FSBX-169	Setting Master for BX-169
FSBX-158	Setting Master for BX-158	FSBX-170	Setting Master for BX-170
FSBX-159	Setting Master for BX-159	FSBX-171	Setting Master for BX-171
FSBX-160	Setting Master for BX-160	FSBX-172	Setting Master for BX-172
FSBX-161	Setting Master for BX-161	FSBX-303	Setting Master for BX-303



SPECIFICATIONS

Model	Dimensions		Weights
BX-900	13 in X 2.5 in X 1.5 in.	(330.2mm X 63.5 mm X 38.1)	1.5 lb. (0.7 kg)
BX-1000	16 in X 2 in X 3 in	(406 mm X 50.8 mm X 76 mm)	2.5 lb. (1.1 kg)
BXG-1000	6 in X 1.75 in X 2 in	(152 mm X 44.5 mm X 50.8mm)	1.5 lb. (0.7 kg)
BXG-1002	6.25 in X 1.75 in X 2 in	(158.8 mm X 44.5 mm X 50.8 mm)	1.5 lb. (0.7 kg)

